



# ACADEMY OF EDUCATIONAL EXCELLENCE

## MAYO CLINIC COLLEGE OF MEDICINE AND SCIENCE

**Lotte Dyrbye, MD, MHPE** – Director, Academy of Educational Excellence

**Heather Billings, PhD** – Associate Director Faculty Development, MCCMS

# ACADEMY OF EDUCATIONAL EXCELLENCE



## What is the academy?

Check out our Mission,  
Goals, Director message,  
and FAQs



## Why join the academy?

View the benefits  
of membership and  
current members



## How do I join the academy?

Learn who can apply, what  
you should know before  
applying, and how to apply

# MISSION

To inspire, develop, recognize, and support Mayo Clinic educators to better prepare learners to advance science, meet patients' needs, and serve as transformative leaders



# GOALS

## Recognize Educators

- Lapel pin
- Mayo communications
- Awards
- Academic promotion

## Build Community

- Academy hosted events
- Faculty Feed Newsletter
- Who is involved in medical education

## Strengthen Education-Related Skills

- Offer and coordinate a rich mosaic of faculty development resources across schools



# FACULTY DEVELOPMENT ACADEMIES

- Positively influence and engage faculty
- Benefit recruitment
- Advance the educational mission
- Create a vibrant academic community
- Develops teaching skills



# ACADEMY OF EDUCATIONAL EXCELLENCE

- ✓ College-wide
- ✓ Support development of all educators
- ✓ Membership based on criterion-based standards
- ⊘ Not a replacement for academic rank
- ⊘ Not a database of recorded teaching hours



# BENEFITS OF MEMBERSHIP



- Receive recognition as an accomplished educator
- Hone your academic skills through access to faculty resources
- Advance your preparedness for academic promotion
- Gain a competitiveness for education leadership roles
- Attend Academy hosted events
- Network within a community of educators

# HOW TO APPLY



- Anyone w. academic rank
- Two criteria
  - Develop self as educator
  - Outcome
    - Teaching
    - Curriculum development
    - Educational leadership
    - Educational scholarship



# CRITERION ONE

## IDENTIFY MEMBERSHIP LEVEL



### LEGACY

80 hours or  
PhD in Education



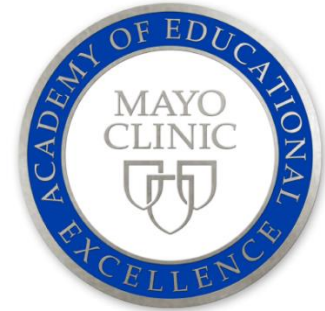
### SENIOR FELLOW

60 hours or  
Masters in Education



### FELLOW

40 hours total



### ASSOCIATE

20 hours  
within 5 years

*Post college/graduate school faculty development*

# WHAT COUNTS TOWARDS MEMBERSHIP?

Your membership demonstrates your commitment as an educator, including

- Time spent developing education skills in **YOURSELF**
  - Participating in courses, seminars, or similar activities to improve your skills as an educator
- Time spent developing education skills of **OTHERS**
  - Presenting courses, seminars, or similar activities to advance the education skills of others



# WHAT COUNTS TOWARDS MEMBERSHIP?

## **This does not include**

- Time spent learning medical or scientific related content and skills
- Time spent teaching medical or scientific related content and skills to others
- Mentoring learners
- 100% of the time spent at education meetings, such as the annual program directors meeting or ACGME/AAMC meetings

# CRITERION TWO

## DEMONSTRATE EXCELLENCE IN ONE OF FOUR TRACKS

Excellence in ...



TEACHING



CURRICULUM  
DESIGN AND  
ASSESSMENT



EDUCATIONAL  
ADMINISTRATION  
AND LEADERSHIP



EDUCATION  
RESEARCH AND  
DISSEMINATION

# HOW DO I APPLY?

- Fill out the application form
- A designee may upload the information
- Two options for listing information
- Applications are accepted anytime – membership awarded quarterly

## ACADEMY OF EDUCATIONAL EXCELLENCE

To apply to the Academy of Educational Excellence, please fill out the short application form below.

First Name

Last Name

Lan ID

Job Title/Position at Mayo Clinic

# OPTION ONE

## DOCUMENTING FACULTY DEVELOPMENT

### Update RE-AIMS

“Relating to teaching/education”

- Academic career development
- Publications/presentations
- Professional society, committee roles



# OPTION ONE

## DOCUMENTING FACULTY DEVELOPMENT

http://dotnetprod.mayo.edu/reaims/web/Home/MainPage

MAYO CLINIC

Home Practice Education Research For You Groups Policies

RE-AIMS Options CV & Reports

Welcome Liselotte N. (Lotte), M.D., MHPE Dyrbye Log off

**Announcement!** -- On Thursday 11/2/17 reports will render from a new system. The output is the same, but the tool is slightly different. The parameters will now be across the top of report.  
**Announcement!** -- 12/06/17: Issue when exporting CV's to PDF. For the time being export the CV use Microsoft Word.

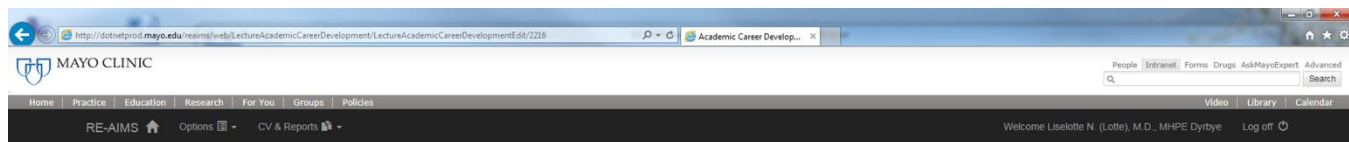


<p>Liselotte N Dyrbye MD, FACP, MHPE</p> <p>CV Quick Links Standard AAPC Cancer Center</p>	Personal Info	Honors & Awards	25	Grants	18	
	Positions	2	Certifications	2	IRB Protocols	34
	Education	4	Licenses	1	Patents	0
	Professional Memberships	32	<b>Courses Attended</b>	<b>58</b>	Bibliography	127
	Journal Editorial Responsibilities	119	Educational Activities	20	Other	0
	Institutional Committees/Memberships	33	Presentations	234		
	Military	0	Interests	2		

Questions? Contact RE-AIMS, or refer to the RE-AIMS Reference Guide (New Version)

# OPTION ONE

## DOCUMENTING FACULTY DEVELOPMENT



Edit Academic Career Development Record for Liselotte N Dyrbye MD, FACP, MHPE

**Teaching/Education Related** Yes  No

**Title** Classroom Teaching and Facilitating Small Group Learning

**Description**

**Setting or Event Name** Mayo Medical School Faculty Development Workshop

**Location** United States of America, Minnesota, Rochester

**Length in Hours** 1.00

**Topic Areas**  
Administration and Leadership  
Curriculum Design and Learner Assessment  
Education Research and Scholarship  
Teaching, Precepting, Mentoring

**Start Date** 06/08/2004 Display the Month, Day, and Year

**End Date** 06/08/2004 Display the Month, Day, and Year

**Mayo Related** Yes  No

Save Back

Questions? Contact RE-AIMS, or refer to the RE-AIMS Reference Guide (New Version)



# Development topics that Count and Do not Count

Yes	No
Tips for teaching	Tips for leadership
How to ask effective questions	Crucial conversations
Delivering effective feedback	Delivering an effective presentation
Helping learners in need	Time spent mentoring residents
Making morning report work	Time spent teaching
2 hour workshop at ACMGE Annual Education meeting on how to give effective feedback	40 hours at the AGME Annual Education Meeting

# OPTION TWO

## APPLICATION PROCESS

### List courses individually

Please list each education-related activity taken, along with the date the event occurred and hours spent for each activity, in the space provided below.

*An example is listed below:*

*Activity: Mayo Clinic Program Director Workshop*

*Length of Activity (Hours): 7 hours specific to feedback to student learners*

*Date of Activity: January 2018*

Activity

Length of Activity  
(Hours)

Date of Activity

# OPTION TWO EXAMPLES

*Hours (4). Provide documentation here:*

Activity	Facilitated SIX Pack- Written Evaluations
Length of Activity (Hours)	1 hour
Date of Activity	01/18/16

*Hours (5). Provide documentation here:*

Activity	Philosophy of Education- Learning Climate workshop
Length of Activity (Hours)	8 hours
Date of Activity	03/23/16

## OPTION THREE- Provide a Narrative

### APPLICATION PROCESS

If you have been teaching/educating in a professional role for  $\geq 15$  years, you may provide a written narrative, in lieu of an itemized list of experiences, describing how you have developed yourself for this role.

All members of the Academy are asked to document hours through REAIMS in order to apply for progressive levels of membership or alternative tracks.

# OPTION THREE

## WRITTEN NARRATIVE EXAMPLE

### Your narrative should include:

- How many years you have been a medical educator
- Specific hours and workshops you have attended to better your skills as an educator
- How you are demonstrating or utilizing these developed education skills in your career
- This should not include time spent teaching medical or scientific content and skills to others, mentoring learners, or attending medical education meetings.

# CRITERION TWO

## DEMONSTRATE EXCELLENCE IN ONE OF FOUR TRACKS

Excellence in ...



TEACHING



CURRICULUM  
DESIGN AND  
ASSESSMENT



EDUCATIONAL  
ADMINISTRATION  
AND LEADERSHIP



EDUCATION  
RESEARCH AND  
DISSEMINATION

# CRITERIA TWO EXAMPLE

*Associate/ Leadership. DOCUMENT excellence within one of four tracks*

You have selected Excellence in Administration and Leadership at the Associate level, select the outcome(s) below that satisfy the requirements.

***Only one outcome achievement is required. If you do not meet any of the activities/outcomes listed, go back to the previous question and select a different membership level/track.***

- Serve on internal educational related committee, list committee/role:

I serve on the Pediatric Residency Program Evaluation Education Committee, the Pediatric Infectious Diseases fellowship committee and am a member of the Education Technology planning committee at Mayo Clinic

- Interviews applicants for educational training programs, briefly describe:

- Coordinates education seminars, courses and/or retreats, briefly describe:

Help to plan education technology forum for years 2018 and 2019.

# RESOURCES FOR EDUCATORS



Deliver seminars to advance colleagues' educational skills



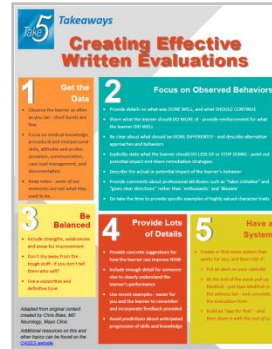
Take 5 Videos and Faculty Feed Newsletter



Faculty Development Calendar



SIX-Packs



Takeaways



Take 5 Videos



# MAYO CLINIC EDUCATION

Mayo Clinic Education

MAYO CLINIC MCHS

## MAYO CLINIC COLLEGE OF MEDICINE AND SCIENCE



Mayo Clinic Alix School of Medicine



Mayo Clinic Graduate School of Biomedical Sciences

ARZ | FLA | RST



Mayo Clinic School of Graduate Medical Education



Mayo Clinic School of Continuous Professional Development



Mayo Clinic School of Health Sciences

ARZ | RST

**ACADEMY OF EDUCATIONAL EXCELLENCE**



Academy of Educational Excellence

## NEWS & EVENTS

NEWS EVENTS

Message from the Executive Dean of Education

College places moratorium on large animal use in medical education

Mayo International Health Program scholarship recipients

DAHEY-AZ nominations sought by July 12

New Eduflr podcast: Blended learning – The fundamentals

More Education News

## SHARED SERVICES

## FOR EDUCATION

Students/Faculty

General Resources

Alumni and Associates

Awards and Recognition

Other Links in Education

## EDUCATION LEADERSHIP

Organizational Structure

Education Committees

Strategic Priorities

## ACADEMIC SUPPORT UNITS

Center for Humanities in Medicine: ARZ | FLA | RST

Center for Procedural Innovation - ARZ

Center for the History of Medicine  
Heritage Days

# ACADEMY OF EDUCATIONAL EXCELLENCE



## Academy of Educational Excellence



### What is the academy?

Check out our Mission, Goals, Director message, and FAQs.



### Why join the academy?

View the benefits of membership and current members.



### How do I join the academy?

Learn who can apply, what you should know before applying, and how to apply.



**FOLLOW US @MayoFacDev**